



**Altrincham Grammar  
School for Girls**  
BRIGHT FUTURES EDUCATIONAL TRUST

# Post-18 Options Evening

Mrs Bell-Walker



# Outline

- Welcome & Labour Market Information
- The current picture
- The options available
- The UCAS process
- Student finance
- Where to find information

*“We are currently preparing students for jobs that don’t yet exist . . . using technologies that haven’t been invented . . . in order to solve problems we don’t even know are problems yet.”*



# Labour Market Information

<https://bridgegm.co.uk/labour-market-information>

## Sectors

Use our sector-by-sector Labour Market Information to take a closer look at job opportunities within a specific trade or profession across the whole of Greater Manchester. Explore current Construction roles, the number of positions within Creative Media, employment prospects in Health Care or promotional possibilities in Sport, and many more industries.

Browse by sector and then simply **click to download the LMI data for the profession you are interested in**. You'll find clear details on job roles, salaries and potential for growth.

Logistics

Low Carbon

Hospitality

Manufacturing

Retail and Wholesale

Business, Financial and Professional Services

Construction

Health and Social Care

Digital and Creative



# Business and Finance

## Facts

The sector is made up of the 4 following areas:



### Business Services

This includes day-to-day office administrative services and routine business support functions

### Employment Services

This includes activities of listing employment vacancies and supplying workers to clients' businesses



### Financial Services



This includes banking, insurance and pension activities, and the activities of holding companies, trusts and funds

### Professional Services

This includes specialised professional, scientific and technical activities. Also legal representation and other activities of civil law



## Overview

There are 25,800 employers in GM's business, financial and professional services sector

These businesses employ 300,000 people across the region

In financial services, GM Is well represented by a range of major firms that are leaders in their field

Greater Manchester is also one of the largest centres of private equity capital in Europe and emerging centre for 'fintech'

In the years to 2035, it is expected that 90,000 jobs will be produced in the sector, with a significant replacement demand to replace the existing workforce that is leaving due to retirement

# Unifrog – Labour Market Information

## Secondary school teacher

[↪ Share](#)[↩ Back](#)

## Labour Market Information (LMI)

### UK Current Jobs

#### Teaching and educational professionals (SOC3)

UK jobs: 1,154,905

Trafford jobs: 5,585 (69th of 214 UK LEAs)

Top 5 LEAs: Kent (31,753), Essex (26,756), Hampshire (26,542), Hertfordshire (25,962), Surrey (25,962)

### UK Salary

#### Secondary education teaching professionals (SOC4)

UK annual median: £41,412

#### Teaching and educational professionals (SOC3)

North West annual median: £40,373

Top 3 regions: London (£44,757), Scotland (£41,412), Wales (£41,140)

### UK Prospects

#### Teaching and educational professionals (SOC2)

UK growth: +12.3% from 2017 to 2027, creating 212,142 jobs

North West growth: +10.5% from 2017 to 2027, creating 19,416 jobs

### What is SOC?

Standard Occupational Classification (SOC) codes are the UK government's official method of sorting jobs into categories.

SOC4 sorts all jobs into 370 different categories, SOC3 has 90 categories, and SOC2 has 25.

Here's an example of how it works. The Unifrog careers profile 'Classical musician' goes into the SOC4 category 'Musicians', which goes into the SOC3 category 'Artistic, literary and media occupations', which in turn goes into the SOC2 category 'Culture, Media and Sports occupations'.

# Unifrog 'next steps' fair

## Next steps fair

Wednesday 8 March @ 16:30

Our free online fair to explore all your post-school options.

Join live sessions and chat one-on-one with top universities and big name employers.

Find out about entry requirements, what an average day is like, and have your own questions answered.

[Sign up for free >](#) or [no thanks](#)

# Unifrog support

Ages 11-14

Ages 14-16

All tools

## Interests profile

✓ Quiz last taken 25 May 22: S and C and A

Start >

## Personality profile

✗ Quiz not taken

Start >

## Work environments profile

✗ Quiz not taken

Start >

## Skills profile

✗ Quiz not taken

Start >

## Careers library

✗ Careers favoured

Go to tool >

## Subjects library

✓ Subjects favoured

Go to tool >

## Know-how library

✗ Guides favoured

Go to tool >

## MOOC

Make your first shortlist

Start >

## Webinars

Hear directly from the experts

Go to tool >



# Keeping a record

Recording what you've done

## Locker

✕ Add your first item

[Go to tool >](#)

## Activities

✕ Recorded at least 10

[Go to tool >](#)

## Skills

✕ Completed all 12

[Go to tool >](#)

## Interactions

✕ Missing 17 Interaction types

[Go to tool >](#)

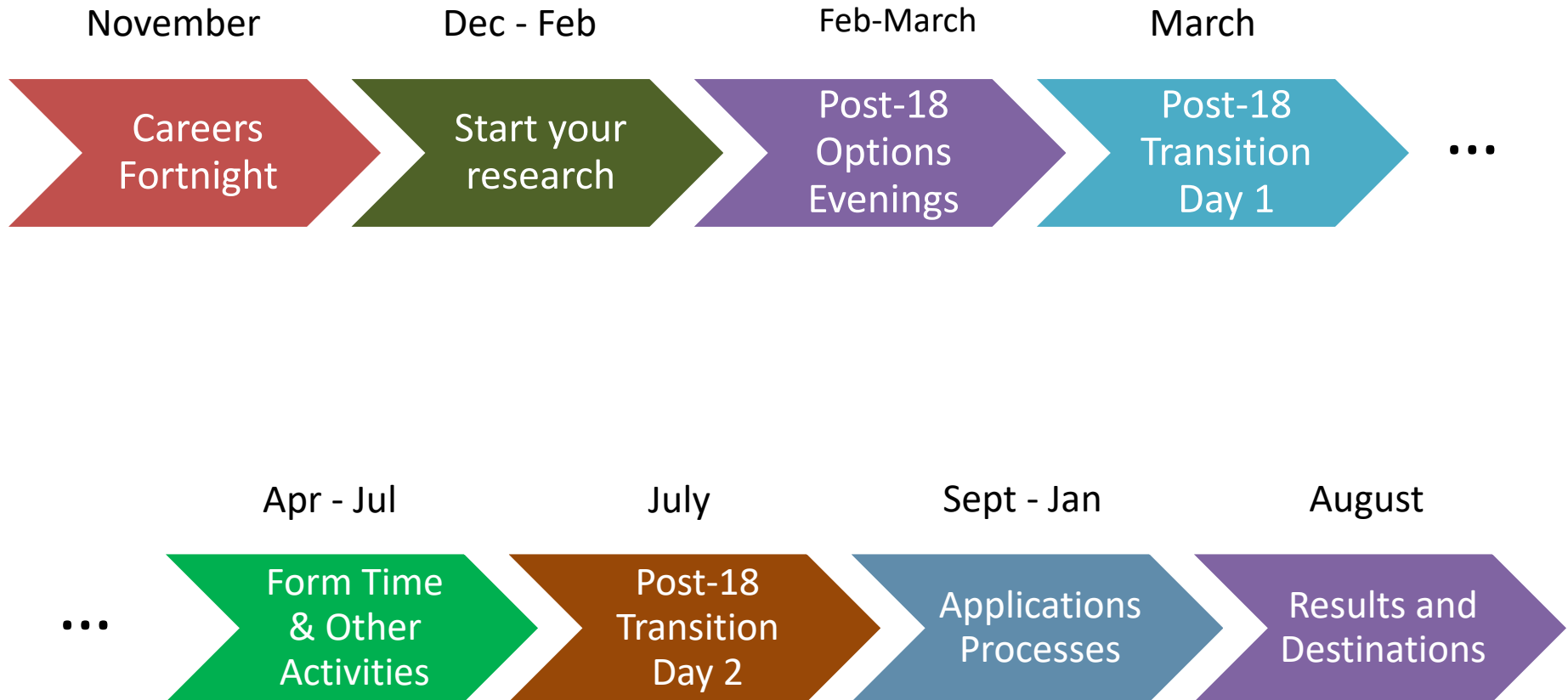
## Academics

✕ 3 Classes, [3 Predicts missing](#)

[Go to tool >](#)

Where are we now?

# Timeline of Activities





Careers  
Fortnight

Start your  
research

- Aim: to start thinking about options
- Included:
  - A program of assemblies and form time activities
  - Information about routes post-18
  - University open day - UCLAN

# Parents & Students

- Two evening sessions:
  - Tonight: post 18 options evening
  - Additional session for parents and students for 'early entry' requirements **(Wednesday 22<sup>nd</sup> March)**

What are the options?

# Possible Routes Post-18

- Full-time work – employed or entrepreneurial
- Apprenticeship
- Gap year – travel or volunteering
- Overseas university e.g. Europe, USA
- Further education
- UK university
- Connexions can help
- See Teams/Emails

# Full time work

- **What?**
- A job either in a company or by starting a company
- **Why?**
- A few unique situations ...



# Apprenticeship

- **They aren't like they used to be!**
- A job in a skilled occupation
- Substantial and sustained training up to 4 years, often leading to a degree/degree level qualification
- Sectors: e.g. marketing, HR, finance, law, engineering, computing, healthcare, construction-related, civil service



# Gap Year

## What?

- Defer or apply as a 'Year 14'
- Volunteering, work (UK or overseas), travel

## Why?

- Before a planned (deferred) university place
- If still deciding ...
- Personal development
- Note – check courses allow them



# Overseas study

## What and where?

- Usually a degree course at a university
- E.g. Ireland, USA, Netherlands, Eastern Europe
- Different course structures

**[astarfuture.co.uk](http://astarfuture.co.uk)**

## Why?

- Course, cost, entry requirements, family ...

# Further Education / Specialist Course

## What?

- Level 3 (A level) or degree-level course

## Why?

- To provide subsequent access to (specialist) training
- E.g. art foundation, AAT, music conservatoires. Often different deadlines.

# UK university

## What?

- Undergraduate course at UK university, Sept 2024

## Why?

- Some jobs require it, better earning prospects for graduates, just because you're interested in ...
- About 90% of our students follow this route
- Application via **UCAS** system

# School Support

## Who's who?

# Sixth Form Team

- First point of contact is the Form Tutor
  - for help and advice throughout the process
  - support with personal statement and/or CV/applications
- Sixth Form Office – Mrs Quigley and Ms Egan
- Mrs Galvin – Head of Sixth Form– Oxbridge applicants
- Mrs Bell-Walker – Post-18 Coordinator – all other applicants
- Ms Parkins – Connexions adviser
- Mrs Gillibrand – Careers Coordinator and work experience

# Applying to UK universities

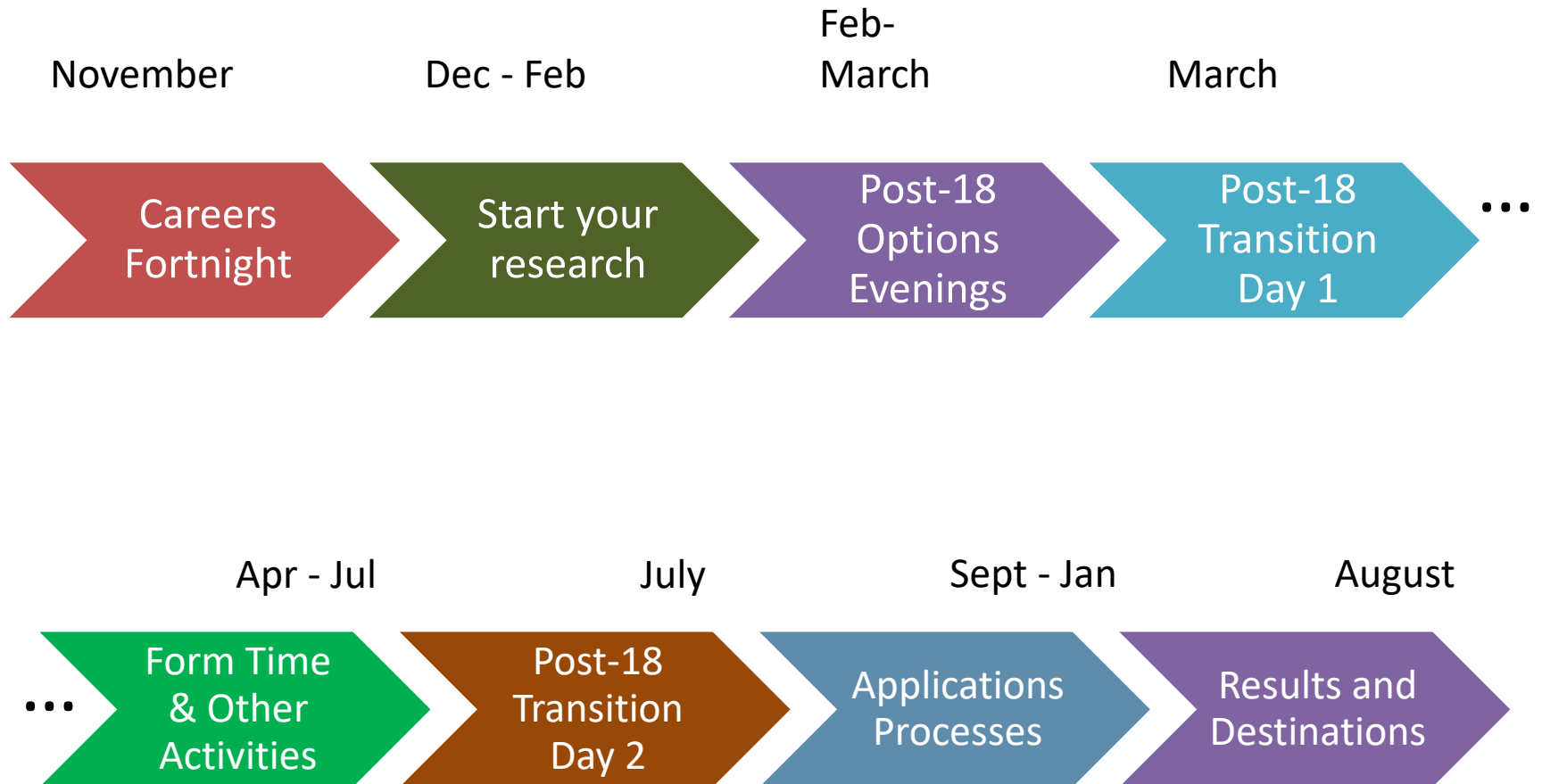
## The UCAS process



# In this section ...

- How to help with ...
  - initial choices (long list)
  - research to produce a shortlist
  - open days
  - being ready to complete the application
- Timeline of an application

# Timeline of Activities



# The information they received this week

- Information about university applications
- Advice on what and where to study
- Chance to think about / rule out other options
- Starting research early

# Research

- Research details from the long list

Narrow down to 5-8 choices:

- Russell group?
- Teaching style?
- Course?
- Scholarships?
- League tables?




# BA (Hons) Religions, Theology and Ethics

[University of Manchester](#)

1 Location : Main Campus

**What you need to  
know about the  
student survey data**

Some data is from students surveyed during the Covid-19 pandemic, which may have had an effect on their responses.

[Find out more](#) 

 Save course

## Course details

Study mode

Full time

Length

3 year course

Distance learning

Not Available

Placement year

Not Available

Year abroad

Not Available

Foundation year

Not Available

Student Satisfaction

89%

agreed they were satisfied with the quality of the course

Average Earnings for

£22,500

15 months after the course for Philosophy and religious studies graduates at University of Manchester

Employment

90%

go on to work and / or study within 15 months after the course


# BA (Hons) Theology & Religion

Durham University

1 Location : Durham Campus

**What you need to know about the student survey data**

Some data is from students surveyed during the Covid-19 pandemic, which may have had an effect on their responses.

[Find out more](#) 

 Save course

## Course details

Study mode

Full time

Length

3 year course

Distance learning

Not Available

Placement year

Optional

Year abroad

Optional

Foundation year

Optional

Student Satisfaction

96%

agreed they were satisfied with the quality of the course

Average Earnings for

£24,000

15 months after the course for Theology and religious studies graduates at Durham University

Employment

90%

go on to work and / or study within 15 months after the course

# Access Programmes

## Manchester Access Programme

- A skills-based programme to help prepare local Year 12 students for university.



# How you can help

Have conversations around:

- Which of the post-18 options is best?
- Is it better to live at home, close to home or further away?
- What other subjects not previously considered could align to their school subjects?
- What will they enjoy doing for the next few years?



# Open Days

- Only 'go' to your long list (5-8 universities)
- Lots of excellent online alternatives, COVID restrictions dependent going to the city itself is a good idea
- Don't have to go on the 'official' open day – most offer tours at other times
- Weekends may be best due to travel times
- Consider also offer-holder days: invited for a more in-depth visit to the department once offers are made

## ... up to June

- Use Unifrog to investigate options in form time and independently
- Get students “application ready”
- Why do you love the subject/career?
- How can you demonstrate it?
- Research your choices
  - How will they assess your application?
  - What is the course content / structure?
  - How is the course taught?
  - What will you have to do for the application?

# If you can offer work experience...

Due to covid there has been a reduced lack of opportunities for students to take part in work experience to boost their application.

If you know that your company or organisation can provide work experience, and you would be happy to complete a health and safety questionnaire and liability insurance check, then please email our careers administrator Kate Gillibrand: [kgillibrand@aggs.bright-futures.co.uk](mailto:kgillibrand@aggs.bright-futures.co.uk)

... 10<sup>th</sup> July 2023

- Advice on preparing an application
- Register on UCAS system online in form groups and enter personal details and qualifications
- Advice and support with applications to other routes *e.g.* art foundation, gap year
- **A draft of your personal statement or CV/application** with a teacher/subject specialist

## ... Aug 2023 – Jan 2024

- Student finalises application
  - Final choices of course and university
  - Final personal statement
- School adds reference and predicted grades
- Student pays ; ‘sends’ to school
- School ‘sends’ to UCAS in time for their deadline

# Predicted Grades

- Professional judgment of teachers is the final decision
- Teachers will be optimistic but this year's grades and class work are important
- 'Inflating' grades:
  - Makes universities no longer trust our predictions
  - Is unnecessary as many courses do not need predictions matching their standard offer
  - Might even result in higher offers

... Oct 2023 – Mar 2024

- Admissions tests e.g. UCAT, LNAT
- Interviews (for some)
- Offers – track application online
- Make firm and “insurance” choices
- Results day – August 2024

# Summary Timeline

- Jun/Jul
  - Register on UCAS web system in tutor time
  - Post-18 Day 2
- Jul/Early Sept
  - Some personal statement support (early)
- Sep
  - Deadline for early entries
  - Predicted grades finalised
- Oct
  - Interview and entry test support starts
- Nov
  - Personal statement support (Jan)
  - Deadline for all entries



# Student Finance

# Student finance:

- Despite most prospective undergraduates opting to take out a student loan, evidence shows that few understand how these loans work and how the repayments work once they finish their studies.
- If you live in England and are applying to start in higher education then I have some resources that will help you navigate student finance on the following slides.

# Student finance:

<https://www.youtube.com/watch?v=DhNtd2p-kwY>

This short video is a useful guide for students starting an undergraduate course 2023 (2024/2025 courses will be similar).

These websites are also very useful:

<https://www.practitioners.slc.co.uk/exchange-blog/2023/february/plan5governmentinformation/>

<https://www.thestudentroom.co.uk/student-finance/understanding-undergraduate-student-loans>

# Outline

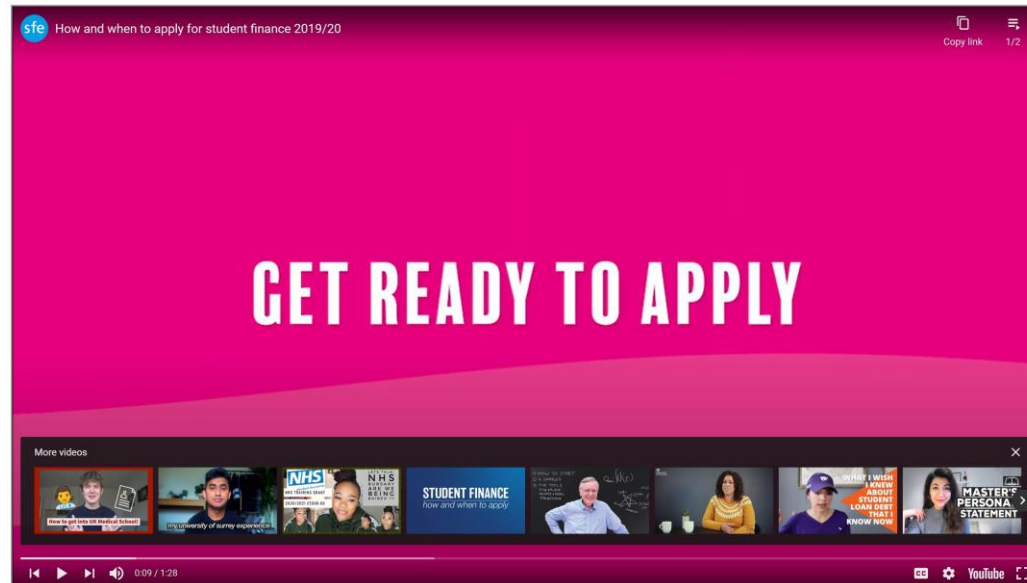
- Annual costs:
  - £9,250 tuition fees (paid direct; student loan)
  - living costs (maintenance loan)
- Support with maintenance depends on household income
- University bursaries
- Part-time work



Student Loans Company

# Student Finance England video

<https://www.ucas.com/connect/videos/getting-paid>



**01 is Private finance**

**02 is Student Loan**

Finance can be amended after the deadline if circumstances change. It takes six weeks to process, and you have up to 9 months after your start date to change your finance preference.

## Tuition Fee Loans

Tuition Fee Loans are available to cover the full cost of tuition fees upfront.

They're paid directly to your university or college, so you don't have to worry about them too much (until it comes time to repay them).

Usually you can get a Tuition Fee Loan for the duration of your course plus one extra year, e.g. in case you drop out and return at a later date.

## Maintenance Loans

Maintenance Loans are available to help with some of your living costs at university, e.g. accommodation, transport, food, and books. It's unlikely this will cover all your living costs, in which case it's up to you to make up the shortfall.

How much you get will work on a sliding scale, based on:

- **where you're studying** – students studying away from home in London receive more to account for the higher cost of living here, compared to those living at home
- **your household income** – students from lower income backgrounds are eligible for more – this is often referred to as 'means-tested' finance, and requires your parents/guardians to provide evidence of their income

In some countries, Maintenance Loans are combined with non-repayable grants, with your household income deciding the ratio of loan-to-grant you get, i.e. students from lower income households receive higher grants and thus less in maintenance loans which they have to pay back.

Whatever maintenance support you receive will be paid to you in instalments, at the start of each term.

**How much will you need to live on at university?** Get a rough monthly cost in seconds with our [student budget calculator](#).

<https://www.ucas.com/finance/undergraduate-tuition-fees-and-student-loans>

# Outline

## How much are tuition fees?

These are the maximum tuition fees depending on where you're from and where you're studying.

Exact fees will be shown when you [search for courses](#).

### Tuition fees by region for courses starting in 2022 to 2023

Student's home region	Studying in England	Studying in Scotland	Studying in Wales	Studying in Northern Ireland
England	Up to £9,250	Up to £9,250	Up to £9,000	Up to £9,250
Scotland	Up to £9,250	No fee	Up to £9,000	Up to £9,250
Wales	Up to £9,250	Up to £9,250	Up to £9,000	Up to £9,250
Northern Ireland	Up to £9,250	Up to £9,250	Up to £9,000	Up to £4,395
EU and other international*	Variable	Variable	Variable	Variable

\* This will not apply to Irish nationals living in the UK and Ireland whose right to study and to access benefits and services will be preserved on a reciprocal basis for UK and Irish nationals under the Common Travel Area arrangement.

## Maintenance Loan for living costs

You have to give details of your [household income](#) and your course start date.

The loan is paid directly into your bank account at the start of each term. You have to pay the loan back.

	2021 to 2022 academic year	2022 to 2023 academic year
Living with your parents	Up to £7,987	Up to £8,171
Living away from your parents, outside London	Up to £9,488	Up to £9,706
Living away from your parents, in London	Up to £12,382	Up to £12,667
You spend a year of a UK course studying abroad	Up to £10,866	Up to £11,116
If you're 60 or over on the first day of the first academic year of your course	Up to £4,014	Up to £4,106

You may not get the full amount, so you may have to find other ways to fund the rest of your living costs. This could include, for example, part-time work, local authority assistance, bursaries, scholarships, or family contributions.

# Scholarships and Bursaries

- **What can you get a scholarship, bursary or grant for?**
- There's extra money for students waiting to be scooped up, for a wide range of reasons, circumstances, and criteria (including some pretty niche ones like the Graham Trust Bursary Scheme, available to those studying in Glasgow with the surname 'Graham').
- Financial need and academic scholarships/bursaries were the most popular of those obtained by students in our survey\*, but you can learn about the following types of extra funding in our dedicated guides.
- [If low residual household income](#)
- [Widening participation \(WP\)](#)
- [Care/foyer leaver, estranged students, carers \(WP\)](#)
- [Disabled \(WP\)](#)
- Performance: [music](#), [arts](#), [sport](#)
- [Placement/year abroad; travel](#)
- [Specified subjects](#)
- [Academic](#)
- [Non-UK students](#)

Students can speak to me or a member of the admin team about this.



# Where to Find More Information

# Useful Websites

## University advice:

- [www.ucas.com](http://www.ucas.com)
- [www.thecompleteuniversityguide.co.uk](http://www.thecompleteuniversityguide.co.uk)
- [www.russellgroup.ac.uk](http://www.russellgroup.ac.uk)
- [www.go2uni.net](http://www.go2uni.net)
- League tables – The Sunday Times, The Complete University Guide, Virgin Guide, The Guardian
- Heap Guide – gives information on entry requirements

## Study abroad:

- [astarfuture.co.uk](http://astarfuture.co.uk)

## Student loans

- <https://www.gov.uk/student-finance>
- [www.moneysavingexpert.com/student-s/student-loans-decoded/](http://www.moneysavingexpert.com/student-s/student-loans-decoded/)

## Apprenticeships

- [theapprenticeshiphub.co.uk](http://theapprenticeshiphub.co.uk)
- [www.gov.uk/further-education-skills/apprenticeships](http://www.gov.uk/further-education-skills/apprenticeships)

## General careers advice:

- Careerpoint-GM:  
<http://careerpoint.bluepoolwebsites.com/>
- [www.push.co.uk](http://www.push.co.uk)

## Non Uni/Gap Year

- [Notgoingtouni.co.uk](http://Notgoingtouni.co.uk)
- [www.gapyear.com](http://www.gapyear.com)
- [www.realgap.co.uk](http://www.realgap.co.uk)

## Writing a statement:

[purepotential.org/personal-statements/](http://purepotential.org/personal-statements/)

# Key Dates for YEAR 12

27 <sup>th</sup> Feb	Post-18 Transition Day 1/Evening
22 <sup>nd</sup> March	Evening for Oxbridge / Medical
10 <sup>th</sup> July	Post-18 Transition Day 2
<b>15<sup>th</sup> September</b>	<b>School Deadline – Early Entry</b>
<b>20<sup>th</sup> October</b>	<b>School Deadline – Other UCAS</b>

***Other courses (music, art, apprenticeships) have their own deadlines that must be researched***



**Altrincham Grammar  
School for Girls**  
BRIGHT FUTURES EDUCATIONAL TRUST

Questions?

